



# 65 Scadding Avenue

Toronto, ON

HOODQ ADDRESS REPORT™

HoodQ  
Homebuyer  
Hub

## SCHOOLS

With excellent assigned and local public schools very close to this home, your kids will get a great education in the neighbourhood.



### Market Lane Junior and Senior Public School

Designated Catchment School  
Grades PK to 8  
246 The Esplanade

### ÉE Gabrielle-Roy

Designated Catchment School  
Grades PK to 6  
14 Pembroke St

### Collège français secondaire

Designated Catchment School  
Grades 7 to 12  
100 Carlton St

### Jarvis Collegiate Institute

Designated Catchment School  
Grades 9 to 12  
495 Jarvis St

### Other Local Schools

### Rosedale Heights School of the Arts

Grades 9 to 12  
711 Bloor St E

### Downtown Vocal Music Academy of Toronto

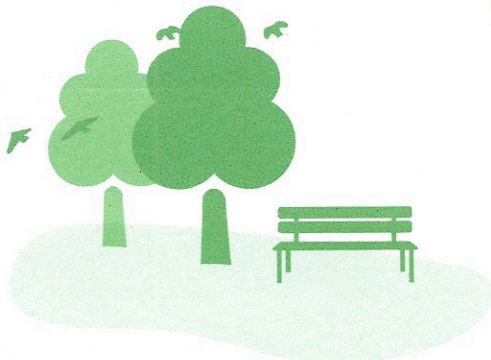
Grades 4 to 8  
96 Denison Ave

### Lord Lansdowne Junior Public School

Grades K to 6  
33 Robert St

## PARKS & REC.

This home is located in park heaven, with 4 parks and a long list of recreation facilities within a 20 minute walk from this address.



### Princess Street Park

18 Princess St



1 min

### Parliament Square Park

44 Parliament St



2 mins

### St. Lawrence Community Recreation Centre

230 Esplanade



1 min

### FACILITIES WITHIN A 20 MINUTE WALK

- |                     |                        |
|---------------------|------------------------|
| 3 Playgrounds       | 1 Community Centre     |
| 1 Dog Park          | 1 Splash Pad           |
| 1 Pool              | 1 Sports Court         |
| 2 Basketball Courts | 1 Trail                |
| 2 Ball Diamonds     | 2 Fitness/Weight Rooms |
| 1 Sports Field      | 1 Gym                  |

## TRANSIT

Public transit is at this home's doorstep for easy travel around the city. The nearest street transit stop is only a minute walk away and the nearest rail transit stop is a 14 minute walk away.

### Nearest Rail Transit Stop

King Station



14 mins

### Nearest Street Level Transit Stop

The Esplanade At Princess St



1 min

## SAFETY

With safety facilities in the area, help is always close by. Facilities near this home include a fire station, a police station, and a hospital within 1.04km.

### St Michael's Hospital

30 Bond St



### Fire Station

207 Front St E



### Police Station

51 Parliament St

## HOME SHOPPING TOOLS

It takes only 60 seconds to complete and sets you up for greater success with your homebuying journey

Get Pre-Qualified Today



We are actively looking for lenders with the best solution so we can offer this to you soon.

# HoodQ

Disclaimer: These materials have been prepared for the HoodQ Homebuyer Hub and are not intended to solicit buyers or sellers currently under contract with a brokerage. By accessing this information you have agreed to our terms of service, which are hereby incorporated by reference. This information may contain errors and omissions. You are not permitted to rely on the contents of this information and must take steps to independently verify its contents with the appropriate authorities (school boards, governments etc.). As a recipient of this information, you agree not to hold us, our licensors or the owners of the information liable for any damages, howsoever caused.